



Hawaii

Destination Guide

2009-2011



NORWEGIAN CRUISE LINE®
FREESTYLE CRUISING®

Hawai'i

Your clients are looking for a different kind of Hawai'i cruise, that's why we've put together this manual, making it easier than ever to show them how incredible cruising Hawai'i with Norwegian Cruise Line can be. Magnificent scenery, exotic beaches and the warm spirit of aloha make Hawai'i one of the most popular travel destinations on the planet. With all the freedom that Freestyle Cruising® gives your clients, this romantic paradise is more enticing than ever. We give your clients what they want – choices, options and best of all, freedom. Check out everything that makes cruising with us, truly different.

OUR HAWAI'I EXCLUSIVES

More Hawai'i with minimal effort:

Only we can let your clients experience four main Hawai'i islands (O'ahu, The Big Island of Hawai'i, Kaua'i and Maui) in 7 days with the ease and convenience of unpacking only once and without having to worry about the logistics of inter-island travel.

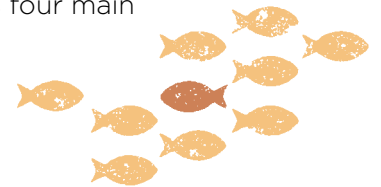
More time in port:

Your clients can take their time, whether they are strolling down the scenic beaches or enjoying any of our 100 Shore Excursions, because cruising Hawai'i with us gives your clients more time to spend in the Hawai'i islands – up to 13 hours in port a day as well as overnight stays on Kaua'i and Maui.

The best way to golf Hawai'i:

Cruising with us is the best way to golf at the top courses on each of Hawai'i's four main islands. Our Golf Hawai'iSM program caters to golfers' every need with:

- Valet service to/from Hawai'i's top courses
- Advance tee times
- Golf club rental or storage



The widest choice of accommodations afloat:

The largest suites and the most interconnecting suites and staterooms to fit groups of any size.

The freedom of Freestyle Cruising:

Unlike other cruise lines, we have no regimented schedules or fixed dining times, freeing your clients to spend every day of their vacation any way they want.

The best variety of Shore Excursions:

We have over 100 Shore Excursions that are designed to show off the unique beauty and diversity of the Hawai'i islands. Clients can surf, snorkel, take helicopter rides, tour an active volcano, attend lū'aus, deep sea fish, visit Pearl Harbor – or do nothing at all.



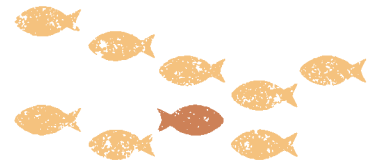
To learn more, go to bookncl.com

FREESTYLE CRUISING: More whatever than ever

- Norwegian Cruise Line's exclusive Freestyle Cruising is all about flexibility and freedom. Freedom from stress. Freedom from schedules. Freedom to do whatever on four main islands in Hawai'i. So guests can make the most of up to 13 hours in port a day and over 100 Shore Excursions.
- Your clients can eat where they want, when they want, with whom they want. And with 12 different dining options on Pride of America, including 24-hour room service, they can certainly eat whatever they want. So there's more time to relax on the islands, because guests don't have to rush back to the ship in time for the dinner bell. In fact, there is no dinner bell.
- They can also dress the way they want, even at night. Because after all, this is Hawai'i. And this is Freestyle Cruising. So your clients are free to wear their favorite Aloha wear on or off the ship.

And now, we give your clients even more freedom to do whatever in Hawai'i than ever before, with the most innovative vacation offerings on water, including:

- Lobster dishes every night
- Signature dishes in every specialty restaurant
- Premium Golden Angus Beef in our steakhouse
- Upgraded linens and pillows
- Extended Kid's Crew® hours
- Poolside cold towels and ambient music
- Hip, new happenings like our White Hot Party and Monte Carlo Night



To learn more about Freestyle Cruising, go to bookncl.com

SHIP FACTS

Pride of America Meeting facilities:

On Pride of America, we offer the biggest and best conference facilities at sea. Over 9,000 square feet dedicated solely to meeting rooms, room for over 600 people, full WiFi capabilities and state-of-the-art A/V equipment are all at your disposal. Not to mention a Group Services Coordinator ready to help make sure everything goes the way you want it to. And with Freestyle Cruising your group can do what it wants and still get business done, all while experiencing everything that the four main islands of Hawai'i have to offer.

Diamond Head Auditorium

Seating Capacity 260
Theater-in-the-round style auditorium that also divides into two rooms with a seating capacity of 130 each.

Lānaʻi Bar & Lounge

Seating Capacity 105

Hawaiʻi Room

Seating Capacity 69

Oʻahu Meeting Room

Seating Capacity 50

Kauaʻi Room

Seating Capacity 36

Molokaʻi Room

Seating Capacity 36

Maui Room

Seating Capacity 36



Pride of America

Built: 2005

Gross tonnage: 81,000

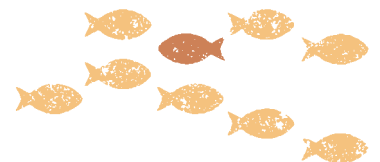
Overall length: 921 feet

Beam: 105 feet

Guests (double occupancy): 2,138

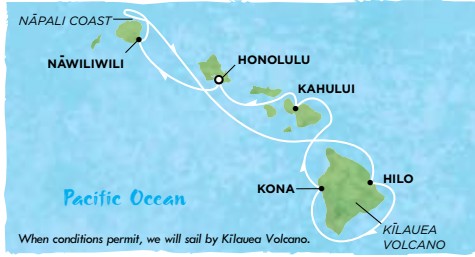
Crew: 935

- 12 Dining Options
- 9 Bars & Lounges
- 2 Swimming Pools
- 4 Hot Tubs
- Family Accommodations
- Bungee Trampoline & Gyroscope
- Santa Fe Spa & Fitness Center
- The largest conference facilities of any cruise ship



To learn more about Pride of America and for complete deck plans, go to ncl.com

ITINERARIES

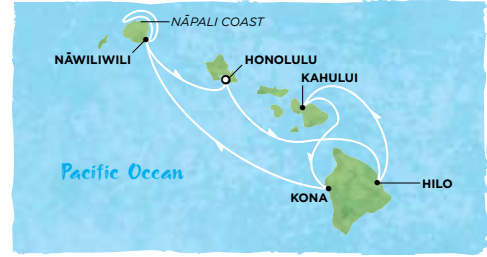


7-Day Hawai'i Inter-Island from Honolulu Pride of America

Day	Port	Arrive	Depart*
Sat	Honolulu, O'ahu		7:00 pm
Sun	Kahului, Maui Optional tour to Lāna'i is available	8:00 am	Overnight
Mon	Kahului, Maui	—	6:00 pm
Tue	Hilo, Hawai'i Evening Sail by Mount Kīlauea	8:00 am	6:00 pm
Wed	Kona, Hawai'i	7:00 am	6:00 pm
Thu	Nāwiliwili, Kaua'i	8:00 am	Overnight
Fri	Nāwiliwili, Kaua'i Afternoon Cruise of Nāpali Coast	—	2:00 pm
Sat	Honolulu, O'ahu	7:00 am*	

2009 SAILINGS	2010 SAILINGS	2011 SAILING
AUG 1*, 8*, 15*, 22*, 29*	JAN 2, 9, 16, 30	JAN 1, 8, 15, 22, 29
SEP 5*, 12*, 26*	FEB 6, 13, 20, 27	FEB 5, 12, 19, 26
OCT 3*, 17*, 24*, 31*	MAR 6, 13, 20, 27	MAR 5, 12, 19, 26
NOV 7*, 14*, 21*, 28*	APR 3, 10, 17	APR 2, 9, 16, 23, 30
DEC 5*, 12*, 19*, 26*	MAY 8, 15, 22, 29	
	JUN 5, 12, 19, 26	
	JUL 3, 10, 17, 24, 31	
	AUG 7, 14, 21, 28	
	SEP 4, 11, 18, 25	
	OCT 2, 16, 23, 30	
	NOV 13, 20, 27	
	DEC 4, 11, 18, 25	

- * Disembarkation usually begins 2 hours after docking.
- ♦ Due to security reasons, all guests must be on board 1 hour before sailing.
- 2009 sailings depart from Honolulu at 8 pm.



7-Day Hawai'i Inter-Island from Honolulu Pride of America

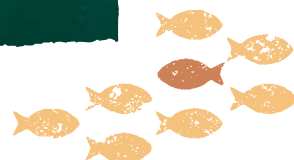
Day	Port	Arrive	Depart*
Sat	Honolulu, O'ahu		8:00 pm
Sun	Hilo, Hawai'i	8:00 am	6:00 pm
Mon	Kahului, Maui Optional tour to Lāna'i is available	8:00 am	Overnight
Tue	Kahului, Maui	—	6:00 pm
Wed	Kona, Hawai'i	7:00 am	6:00 pm
Thu	Nāwiliwili, Kaua'i	8:00 am	Overnight
Fri	Nāwiliwili, Kaua'i Afternoon Cruise of Nāpali Coast	—	2:00 pm
Sat	Honolulu, O'ahu	7:00 am*	

2009 SAILINGS	2010 SAILINGS
SEP 19	OCT 10
	JAN 23
	OCT 9*
	NOV 6*

- * Disembarkation usually begins 2 hours after docking.
- ♦ Due to security reasons, all guests must be on board 1 hour before sailing.
- ▲ These sailings depart from Honolulu at 7 pm.



For pricing visit bookncl.com or call 1.800.327.7030



PORTS OF CALL & NCL'S SHORE EXCURSIONS

Honolulu, O'ahu

- The largest city in the world – about 1,500 miles long.
- USS Arizona at historic Pearl Harbor (USS Arizona Memorial, Battleship Missouri Memorial, USS Bowfin Submarine Museum and Park, Pacific Aviation Museum, USS Oklahoma Memorial).
- Home of 'Iolani Palace, a beautiful palace known for its architecture and galleries.

Sample Shore Excursions:

- Pearl Harbor & USS Missouri
- Ko'olau Golf Club
- Explore O'ahu's Famous North Shore

Hilo, Hawai'i

- The Mauna Kea mountain is the tallest mountain in the world (measured from the ocean floor).
- Known for its entertainment, culture and cuisine.
- Hilo has a very low population density (about 872 people per square mile).

Sample Shore Excursions:

- Mauna Kea
- Hilo Coast & Botanical Gardens
- Volcanoes National Park

Lahaina, Maui

- Haleakalā Crater (the world's largest dormant volcano) is a 10,000-foot crater located on Maui.
- The quaint village of Lahaina is well known for its museums, shops and restaurants.
- 'Iao Valley is a beautiful and scenic valley located near Lahaina.

Sample Shore Excursions:

- Ocean Center & 'Iao Valley
- Atlantis Submarine
- Hanā Haleakalā Helicopter

Kahului, Maui

- Maui's largest city and main retail center.
- The Bailey House Museum is filled with period furnishings, artifacts, art and local books.
- Home to the 53-mile Hanā highway, which is a scenic highway filled with incredible island views.

Sample Shore Excursions:

- Best of Maui
- Maui Plantation & 'Iao Valley
- Haleakalā Crater

Nāwiliwili, Kaua'i

- Hike up the Waimea Canyon for views of the "Grand Canyon of the Pacific."
- The beautiful coastline is best known for the 3,000 foot cliffs of the Nāpali Coast.
- One of the best known rivers for kayaking here is the Wailua River.

Sample Shore Excursions:

- Wailua River & Fern Grotto
- Journey to Waimea Canyon
- Mokihana Helicopter

Kona, Hawai'i

- Kona means "leeward" (west side) in Hawaiian.
- The Kona side of the Big Island gets very little rain and enjoys more than 300 days of sunshine a year.
- Kona is famous for sportfishing, snorkeling and of course, coffee.

Sample Shore Excursions:

- Glass-bottom Kona Nature Cruise & Dolphins
- Body Glove Snorkel
- Golf Big Island Country Club

To learn more about Hawai'i Shore Excursions, go to www.ncl.com/shorex