



NORWEGIAN CRUISE LINE
FREESTYLE CRUISING



Wireless Internet & Printing

Logging off our Wireless Network

If you have accidentally closed the "LOGOUT" browser window, you can Logout manually by typing in the following Web Address in the Address Bar: <http://1.1.1.1>

If you forget to logout when using a Laptop, the system will automatically log you off within 3 minutes of no network activity.

Connecting to our Wireless Network

Simply open your Web Browser. You will be directed to a Login Page. Should you experience any difficulty connecting to our Wireless Network, some of your settings (as indicated below) may need to be changed or reconfigured, in order to facilitate Wireless Network access. Please note: Each laptop is configured differently and changing the below settings does not guarantee you will be able to connect to the Wireless Network. These are general settings that need to be configured for most laptops to access a Wireless Environment.

1. Make sure you have the SSID set to "mtndsi":
 - a. Move the mouse over the "Wireless Connection" icon on the bottom right corner of the screen. It should show: "Wireless Network Connection (mtndsi)".
 - b. If it is not connected: Right click on the "Wireless Connection" icon and select "View Available Wireless Networks".
 - c. Choose "mtndsi". Check the "Allow me to Connect" box, then click "Connect".
2. Check your Internet Settings:
 - a. Go to Start→Settings→Control Panel→Internet Options→ under the "Connections" tab.
 - b. Make sure "Never dial a connection" is selected in the top box.
 - c. Click on the "LAN Settings" button at the bottom.
 - d. Make sure "Automatically detect settings" is checked at the top.
 - e. Make sure "Use a Proxy Server" is not checked.
3. Make sure any Firewall software you may have is disabled:
 - a. Look in the system tray (next to clock on task bar) for firewall/internet security program.
 - b. Right-click on the icon. Select "Disable".
4. Make sure your wireless card's encryption is disabled:
 - a. Right click on the "Wireless Connection" icon and select "Status".
 - b. Click on "Properties" and choose the "Wireless Networks" tab.
 - c. Highlight "mtndsi", and click "Configure".
 - d. Under the "Association" tab, all boxes should not be un-checked.
5. Make sure Pop-up Blocker software is disabled:



NORWEGIAN CRUISE LINE®
FREESTYLE CRUISING®



Wireless Internet & Printing

- a. Look in the system tray (next to clock on task bar) for Pop-up Blocker programs.
 - b. Right-click on the icon. Select "Disable".
6. Make sure DHCP is enabled on the wireless card:
 - a. Go to Start→Settings→Control Panel→Network Connections.
 - b. Right click the "Wireless Network Connection"→Properties.
 - c. Double-Click "Internet Protocol (TCP/IP)".
 - d. Make sure "Obtain an IP address automatically" is selected.
 - e. Make sure "Obtain DNS server address automatically" is selected.
 - f. Click "OK"; Click "OK".
7. Make sure SSID is turned off:
 - a. Go to Start→Settings→Control Panel→Network Connections.
 - b. Right click "Wireless Network Connection"→Properties.
 - c. Select "Wireless Networks" tab.
 - d. Click "Configure".
 - e. Make sure all boxes are not checked.
8. If you are running Norton Anti-Virus, disable script blocking:
 - a. Go to Norton Anti-virus Properties.
 - b. Find the "Script Blocking" box. Be sure it is not checked.
9. **Microsoft Outlook Users:** You may have to change the outgoing SMTP server address to **172.31.0.2** in order to send your messages. Please remember to make a note of your original address, as these will need to be reset to your original configuration when you get home.

MAC OS Users

1. Turn on the "Airport" in the "Internet Connect" application.
 - a. Open "Finder" (two-tone happy face) from task bar (menu dock at bottom).
 - b. Click on the "Application" button (pencil, pen & ruler in the shape of an A).
 - c. Scroll down the list of applications and open "Internet Connect" (yellow & black icon with globe & phone).
 - d. Click on the "Turn on Airport" button.
 - e. Using the drop down arrow, open the network menu and select "mtndsi".
 - f. The blue bar should now show the signal strength of the "mtndsi" network.
 - g. Open the Internet Browser and see if you are redirected to our Login page.
2. If "mtndsi" network does not appear in the network menu list:
 - a. Go to "Dock" menu and open "System Preferences".
 - b. Open "Network" (dark blue globe) and open "Preferences".
 - c. The following settings should be marked:
 - i. LOCATION: set to "automatic".
 - ii. SHOW: set to "Airport".
 - iii. TCP/IP: >> CONFIGURE >> set to "Using DHCP".
 - iv. AIRPORT TAB: select "Join network with best signal" (or temporarily use "Join a specific network" to select the "mtndsi" network).
 - v. Click "Apply Now" button.
 - vi. Restart laptop for settings to take effect.



NORWEGIAN CRUISE LINE
FREESTYLE CRUISING



Wireless Internet & Printing

Printing from your laptop with the wireless

Available on the following ships:

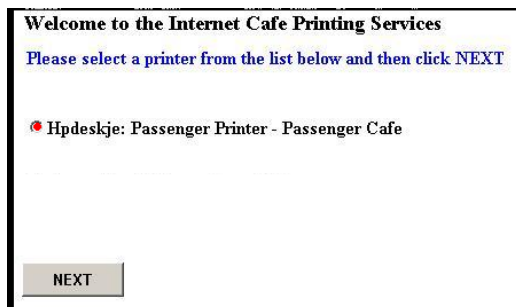
- Pride of America
- Pride of Hawaii
- NCL Dawn
- NCL Star
- NCL Jewel

We are pleased to be able to offer the ability to print from your laptop. Print functions are only available when you are logged in and online. In order to utilize this printing service, you must complete the process of installing the ship's printer on your laptop. Please be advised that the initial setup will take several minutes.

1. Once logged in, click the **"Print Services"** icon in the **LOGOUT** window.
2. Login to the **"Printing Services"** screen by re-entering your username & password:



3. Select **"Printer"** page then select the printer listed to install on your laptop:



4. Printer Install page – Click **"Connect"** on the left side of the page. A window will confirm if you want to install the printer. Click **"YES."**



NORWEGIAN CRUISE LINE
FREESTYLE CRUISING



Wireless Internet & Printing

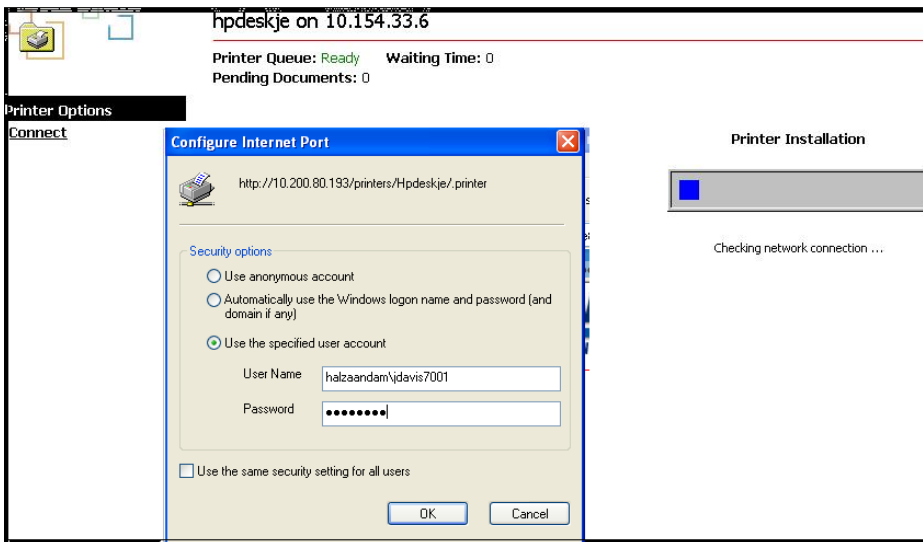


5. Before installing the printer, your wireless account will be verified. This may take a few seconds.

6. A window will pop up asking for a username and password.

Username: enter the following: <3-letter cruise line code><ship name>\< Internet Café login username>
Example: A guest on the Norwegian Cruise Lines Sun would enter: **NCLSUN\Your Internet Café login Username.**

Password: Enter your Internet Café login password.



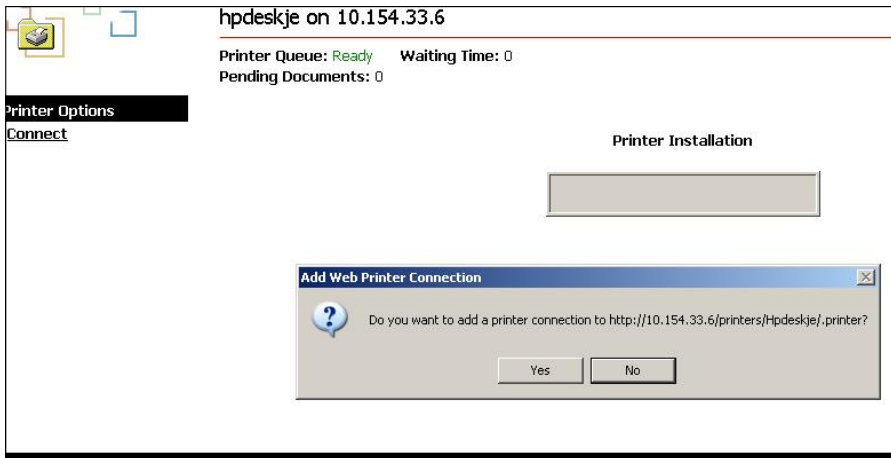
7. Next you will be asked if you want to add a printer connection. Click "YES":



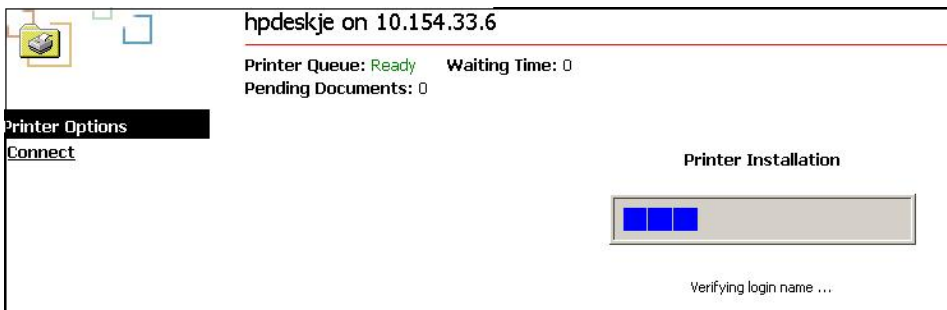
NORWEGIAN CRUISE LINE
FREESTYLE CRUISING



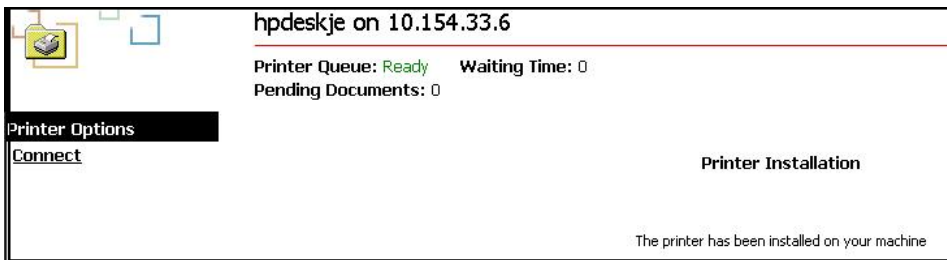
Wireless Internet & Printing



8. It will take a few minutes to verify your login name and install the printer:



9. Once the printer installation is complete, you will receive a message on the screen. You are now set-up and ready to print from your laptop.



10. You will be automatically charged for print jobs issued to this printer. Printed pages will be available to pick up in the Internet Cafe. We are not responsible for printed pages that are not picked up immediately.

11. Please note that you will be logged out after each completed print job.



NORWEGIAN CRUISE LINE®
FREESTYLE CRUISING®



Wireless Internet & Printing

Wireless coverage areas

DAWN	Atrium Deck 7, 8 & 9, Deck 12 Poolside, Conference Room & Library
DREAM	Deck 12 Observatory Lounge, Deck 11 Pool area, Deck 9 internet café and coffee shop
CROWN	Deck 8, Deck 11 FWD, Deck 7
MARCO POLO	NO WIRELESS
MAJESTY	Deck 5, Deck 7 Fwd, Deck 9 Fwd, Deck 10 Mid
DAWN	Atrium Deck 7, 8 & 9, Blue Lagoon Restaurant, Pearly Kings Pub, Spinnaker Lounge, Deck 12 Poolside, Conference Room & Library
SEA	Stardust Lounge(deck 5 aft), Butterfly room (deck 5 aft), Gatsby's (deck 10 aft), Pool deck (pool area deck 9)
SPIRIT	Internet Café Deck12 Fwd, Raffles buffet restaurant, Deck 12 Aft. Pool deck Deck12 Mid, Grand Centrum Deck 7 &8 Mid, The Bund Deck 7 Mid, Blue Lagoon Deck 7 Mid
STAR	Deck 7,8 &9 Atrium Areas, Deck 12 &13,Confrence rooms, reading rooms, Poolside, Beer Garden.
SUN	Atrium Deck 5,6,7 Library deck 6, Pool area deck 11
WIND	Public Lounges Deck 9 thru 12/Pool area and conference room
PRIDE OF AMERICA	Public areas Decks 4, 5, 6, 11, 12, 13, 14
PRIDE OF HAWAII	All public areas
JEWEL	All public areas