

2023

# BLISS DENALI EXPLORER CRUISETOUR

PRE-CRUISE | 12-DAY CRUISETOUR



**NORWEGIAN**  
CRUISE LINE®



# TRAVEL INFORMATION

## Welcome!

Whether you are a first-time or returning visitor to the 49th state, we are delighted you have chosen this unique tour and Alaska as your destination. Along the journey, you will meet many Alaskans who call this land home — from your Tour Director who assists with all aspects of your tour enjoyment to your local driver, whose knowledge will astound you time and time again. You will marvel at Alaska's wilderness and wildlife viewing opportunities while having the time and freedom to discover your very own path. On Norwegian Cruise Line's Alaska Cruisetours, you'll experience the coastline and interior of the state as if you were a native. Enjoy the journey. We look forward to providing you authentic Alaskan experiences every step of the way.

## IMPORTANT NOTE

A transfer from the Fairbanks airport to your hotel is included on the starting date of the Cruisetour when arriving flight information is given to Norwegian Cruise Line at least 10 days prior to Cruisetour start date. Please contact Norwegian with your flight details:

Guests from U.S./Canada call 800.327.7030

Guests from U.K. call 0845 201 8900

Guests from France call +49 1805 62 55 27 (0.14/min.\*)

Guests from other European countries call 00800 0310 21 21 (toll-free\*)

\*All rates refer to calls from landline networks. Rates may vary for calls from mobile networks. Guests who do not provide arriving flight information will forfeit this transfer and need to make their own arrangements to the hotel. Unused transfers are non-refundable.

If you purchased your airfare independently and experience any flight cancellations or delays en route to Alaska, please contact the tour operator, Premier Alaska Tours, with your updated flight information. If you purchased your airfare through Norwegian Cruise Line, we will contact Premier Alaska Tours on your behalf.

### EMERGENCY CONTACT ONLY FOR DAY OF TRAVEL:

#### Premier Alaska Tours

Phone: 907.375.6321

#### SMS International Shore Operations - Seattle

Phone: 206.455.2940

## HOTEL TRANSFER

Upon your arrival to Alaska, look for the Norwegian Cruise Line/Premier Alaska Tours Representative located in the baggage claim area for your transfer to the hotel.

## PASSPORTS AND VISAS

It is each traveler's responsibility to have a passport valid for at least six months after the date of travel and a visa, if required.

**IMPORTANT:** Passengers who are not U.S. citizens must check with the respective consulate or visa agency to determine what personal identification is required. Passengers who enter, leave and then re-enter the same country on their itinerary should check if they require a double-entry visa.

## TRIP PREPARATION

A little pre-planning can make your trip go more smoothly. Several weeks before your trip, make a list of what you will need to take with you. Make sure your personal documents (passports, visas) are in order and that you have enough prescription medications to last throughout the trip. We suggest you make photocopies of passports, visas and any other important travel documents and pack them separately from the originals. Avoid placing important medications or valuables, such as cameras or jewelry, in your checked luggage.

## TOUR DIRECTORS

Your Alaskan Tour Director will be with you for the entire trip to help make the most of your time and experience the best Alaska has to offer. From providing information about Alaska's history, people and wildlife to offering suggestions on local restaurants and optional excursions, your Tour Director has your best interests at heart.

## HOTELS

Norwegian Cruise Line features Alaskan-owned and locally operated hotels to help you experience as much of the rugged and rustic atmosphere of Alaska whenever possible. Since Alaska is a fairly remote location, some hotels may not have the same amenities and services you would normally expect in the lower 48 states; however, all hotels used are clean and comfortable. Hotels are assigned at Norwegian's discretion. Unfortunately, we are unable to accommodate requests for hotel substitutions.

## MEALS

Meals are not included unless specifically stated in your itinerary. All hotels have restaurants on-site. Other options available are either within walking distance or a short taxi ride from your hotel. Your Tour Director can help recommend restaurants, especially for guests with special dietary needs.

### AVERAGE MEAL COST PER PERSON

#### Breakfast

\$18 to \$25

PER PERSON

#### Lunch

\$18 to \$30

PER PERSON

#### Dinner

\$20 to \$50

PER PERSON



# TRAVEL INFORMATION



**Note:** \* We're continually evaluating and enhancing our health and safety protocols and will make updates as public health standards evolve.



Skagway, Alaska

## BAGGAGE

At each destination, we will ensure your bags are efficiently delivered to your hotel room. Upon departure, they will be picked up from your room and loaded onto the motorcoach.

## BAGGAGE STORAGE DURING TOUR

As a convenience to our guests, we offer a service to store luggage while you are on the land portion of your Cruisetour. Your Tour Director will provide you with special tags to indicate storage. Those pieces of luggage will remain secured on the motorcoach during your tour.

## PACKING RECOMMENDATIONS

- Comfortable, casual clothing for dressing in layers
- Comfortable shoes, such as tennis shoes or hiking boots
- Waterproof jackets, hats and warm clothing
- Sunscreen, binoculars, insect repellent and umbrellas
- Camera and plenty of film or spare memory card

**Note:** There are no laundry facilities on tour.  
Please bring adequate clothing.

## CHILD RESTRAINT INFORMATION

Alaska State Law requires children to be in a car or booster seat as follows:

- Children younger than 1 year of age or less than 20 lbs (9 kg) must be in a rear-facing infant seat.
- Children ages 1-4 and at least 20 lbs (9 kg) must be in a child restraint.
- Children ages 5-7 who are less than 57 in (1.4 m) tall or less than 65 lbs (30 kg) must be in a booster seat. Booster seats are no longer required for children ages 5-7 once they reach 57 in (1.4 m) tall or weigh 65+ lbs (30+ kg).
- Parents are responsible for providing the appropriate car seat.

## CLIMATE (APPROXIMATE) MARINE AND WILDLIFE

MONTH	LOW	HIGH	AVERAGE HOURS OF LIGHT
May	40°F 4°C	55°F 13°C	May 17 HOURS
Jun	48°F 9°C	62°F 17°C	Jun 18 HOURS
Jul	52°F 11°C	65°F 18°C	Jul 18 HOURS
Aug	50°F 10°C	62°F 17°C	Aug 16 HOURS
Sep	40°F 4°C	55°F 13°C	Sep 14 HOURS

- Wildlife is unpredictable but plentiful. You will have many opportunities for marine and wildlife viewing.
- When viewing wildlife, we strictly adhere to all suggested or required distances and procedures recommended by local wildlife agencies.

## SUGGESTED TIPPING: ESCORTED LAND TOURS

Tipping is not mandatory. However, here is a suggested guideline:

- Tour Director: \$5-\$7 per person, per day
- Motorcoach Driver: \$5-\$7 per person, per day
- Rail Host Guide: \$1-\$2 per person, per day

## SMOKING

Smoking is not allowed in your motorcoach, on the Alaska Railroad, Denali Park bus or in your hotel room.

## GUESTS WITH DISABILITIES

Please contact Norwegian Cruise Line to inform us if you have special needs. Motorcoaches and hotels are wheelchair accessible; however, due to limited availability, advance notice is required.



# BLISS DENALI EXPLORER

*A comprehensive Alaska Denali program in only five days, complete with riverboat and railroad experiences as well as a preview of Denali's incredible wilderness. A flight to Seattle is included.*

## LAND TOUR HIGHLIGHTS

- 5-day land tour escorted by a local guide.
- Denali Natural History Tour narrated by an Alaska naturalist
- Riverboat cruise and Fairbanks tour
- Private tour of Iditarod Sled Dog kennel
- Deluxe Dome Railcar from Talkeetna to Anchorage
- Plenty of time for optional exploring

## CRUISE TOUR ITINERARY†

### DAY 1: Tuesday - Air Arrival Day\* Into Fairbanks

Welcome to Fairbanks. Whether you're exploring Alaska's Golden Heart City or the wonderful amenities your hotel has to offer, get ready for an unforgettable journey in the days ahead. Please note that the standard hotel check-in time is 3:00 pm. Guests who arrive earlier may have to wait to occupy their rooms.

Enjoy the rest of your day at leisure.

**Overnight: Fairbanks**

### DAY 2: Wednesday - Fairbanks

This morning enjoy a cruise on the *Riverboat Discovery*, a three-hour journey that will take you into the heart of Alaska. Operated by a family who has made the Alaskan rivers home for five generations, you'll witness a Bush Pilot take off and land beside the boat and hear stories of flying into remote Alaska firsthand. Halfway through the experience, you'll be immersed in frontier living with a guided walking tour of a re-created Athabascan Indian village. See cabins made of spruce logs, along with indigenous dwellings that have allowed the strong Athabascan people to survive for thousands of years in this harsh environment. Afterwards, board your deluxe motorcoach for a city tour of Fairbanks before stopping in historic downtown for lunch on your own. This tour includes a stop at the Trans-Alaska Oil Pipeline and gives you a great overview of the Fairbanks community. Open afternoon and evening to explore Fairbanks or take an optional tour.

**9:00 am** *Riverboat Discovery* Cruise

**12:45 pm** Lunch on your own in Fairbanks

**2:45 pm** Fairbanks City Tour

**4:00 pm** Return to Hotel

**Overnight: Fairbanks**

### DAY 3: Thursday - Fairbanks/Denali

This morning, board your deluxe motorcoach to travel to Denali National Park. More than just a mountain, Denali National Park is six million acres of wild land. After lunch on your own, your tour will take you into this pristine region of Alaska on the only road into and out of the park. Along the way, enjoy a fully narrated ride learning about the flora and fauna of the area while looking out for the wild animals that roam freely and call this park home. While in this beautiful area, set aside time to experience the solitude and tranquility that vast wilderness can provide.

During your Denali Natural History tour, you will travel into Denali National Park, enjoying the incredible scenery and learning about the history of the park.

**9:00 am** Depart Fairbanks for Denali by motorcoach

**12:00 pm** Arrive in Denali and lunch on your own

**1:00 pm** (approx.) Denali Natural History Tour

**Overnight: Denali**

Fairbanks, Alaska

† All times shown are approximate and subject to change without notice due to local conditions. \*The transfer from airport to hotel on Day 1 is included when arriving flight information is provided to Norwegian Cruise Line at least 10 days prior to tour start date. Arrival Transfer is offered only on the starting date of the tour. Guests who do not provide flight information within the guidelines forfeit this service. Unused transfers are non-refundable. A transfer to the Anchorage airport and a transfer from the Seattle airport to the port on Day 5 are included and no action is required by guests as flight details will be provided by NCL to our local operators.

# BLISS DENALI EXPLORER

*A comprehensive Alaska Denali program in only five days, complete with riverboat and railroad experiences as well as a preview of Denali's incredible wilderness. A flight to Seattle is included.*

## CRUISE TOUR ITINERARY†

### DAY 4: Friday - Denali/Anchorage

Today's itinerary includes a morning kennel tour. Learn about the Alaska state sport of dog mushing with an included stop at a local Iditarod sled dog kennel. You'll be amazed to learn about this fascinating sport, the musher, the dogs and even get to hold a future champion puppy in your arms. After this authentic visit, we won't be surprised if you are ready to run "The Last Great Race" yourself. Late morning, continue south by motorcoach to the town of Talkeetna. Continue on your journey south while traveling along the rails of the world-famous Alaska Railroad from Talkeetna to Anchorage in a deluxe dome railcar. Full bar and meal service are available for purchase during your rail journey.

<b>8:30 am</b>	Iditarod Sled Dog Kennel Visit
<b>11:00 am</b>	Depart for Talkeetna by motorcoach
<b>5:00 pm</b>	Deluxe Dome Rail, Talkeetna to Anchorage
<b>8:30 pm</b>	Arrive at Anchorage Hotel

### Overnight: Anchorage

### DAYS 5-12: Saturday - Anchorage/Norwegian Bliss Cruise

Transfer (included) to the Anchorage International Airport for your flight to Seattle to embark on Norwegian BLISS. An economy class flight from Anchorage to Seattle is included in the tour. Flight upgrades are not available. Your flight details and ticket information will be provided by your guide while on tour. Guests travelling together will be seated together where possible. Your transfer in Seattle has been pre-arranged and no action is required from guests. You will be met by our Seattle Ground Operator after baggage claim. Look for someone holding an NCL sign when you exit baggage claim.



Norwegian Bliss, Alaska

† All times shown are approximate and subject to change without notice due to local conditions.

# OPTIONAL TOURS

Enhance your Cruisetour experience with additional tours that can be purchased along the way through your Norwegian Tour Director.

*Note: Below is a sample of options which are subject to change at the discretion of each operator. Prices, times and complete program details will be provided by your Tour Director.*

---

## DENALI NATIONAL PARK

### Denali National Park Visitor Center (complimentary)

Learn more about the park by visiting the Denali Visitor Center located two miles from the park. Talk with park rangers and experience the exhibits at this award-winning facility. View the "Heartbeats of Denali" at the theater to experience the four seasons of this special place we call Denali. The bookstore and the concession-operated Morino Grill are located on the Visitor Center campus.

### Helicopter - Denali by Air

For "once-in-a-lifetime" adventurers, enjoy a 50-minute helicopter thrill as you soar high above the land and view wildlife and alpine glaciers while observing the Alaska Range and Denali.

### Whitewater Rafting or Scenic Float Adventure

Each trip is approximately three hours with a total of two hours on the water. The Canyon Run is an exciting whitewater (Class III/IV) adventure. This is one ride where you will get wet! The Scenic Float is great for families. Enjoy scenic beauty along with Class II/III rapids.

## FAIRBANKS

### Arctic Circle Air Adventure


Fly above the Arctic! This thrilling tour allows guests to experience the Brooks Range, cross the Arctic Circle and fly the wilderness airways of Alaska's Arctic. This fully narrated adventure also includes a visit to the community of Wiseman, views of the Trans-Alaska Oil Pipeline and mighty Yukon River. Fully narrated.

### Alaska Salmon Bake

Feast the Alaskan way! Enjoy an all-you-can-eat Alaskan-style meal as you dine on fire-grilled king salmon, roasted prime rib and cod direct from Alaska's icy waters. Served with a salad bar, dessert and beverages. Afterwards, stroll through the neighboring Pioneer Park, an Alaskan theme park featuring historical buildings, transportation venues and shops, or catch a show!

### Golden Heart Review

Experience the "Golden Heart Revue" at the Palace Theater for an evening of dinner, history and fun. This lighthearted musical comedy is about the gold rush and the founding of Fairbanks. Sold in conjunction with Alaska Salmon Bake.



## A FRONTIER FOR THE WHOLE FAMILY.

Whether taking the kids dog sledding, enjoying a scenic hike or taking a helicopter flight over a glacier, our Cruisetours offer a range of activities as wide open as the wilderness around you.

Denali National Park and Preserve, Alaska

# LAND TOUR HOTELS

*Norwegian features Alaskan-owned and locally operated hotels to help you experience as much of the rugged and rustic atmosphere of Alaska whenever possible.*

Since Alaska is a fairly remote location, some hotels may not have the same amenities and services you would normally expect in the lower 48 states.

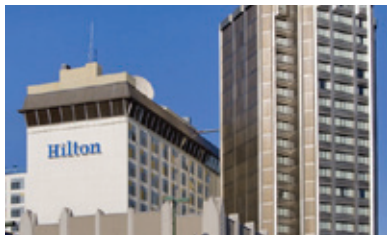
If you are traveling with family and friends in more than one stateroom, please advise your booking agent to link your reservations to ensure your entire party will be accommodated at the same hotels throughout the land tour.

**IMPORTANT NOTE:** For bookings with 1-4 guests in a stateroom on the ship, one room (with two double beds) is included and will be assigned on the Cruisetour (Alaska land portion). For bookings where there are more than 4 guests in a stateroom on the ship, an additional room is included on the Cruisetour (two double beds / up to 4 guests per room). If additional rooms are desired for the Cruisetour portion for comfort, please contact Norwegian Cruise Line in advance of travel to request and price accordingly. Requests must be received at least 60 days before departure and confirmations will be based on availability at the time of request.

---

## BLISS DENALI EXPLORER

### ANCHORAGE PROPERTY\*



**HILTON ANCHORAGE**  
500 W 3RD AVE  
ANCHORAGE, AK 99501  
907.272.7411

### DENALI PROPERTIES\*



**DENALI PARK VILLAGE**  
231 GEORGE PARKS HIGHWAY  
DENALI NATIONAL PARK, DENALI, AK 99755  
907.683.8900



**DENALI BLUFFS**  
238 PARKS HWY  
DENALI NATIONAL PARK AND PRESERVE, AK 99755  
866.683.8500

### FAIRBANKS PROPERTIES\*



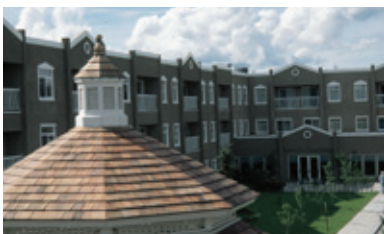
**PIKES WATERFRONT LODGE**  
1850 HOSELTON RD  
FAIRBANKS, AK 99709  
877.774.2400



**RIVER'S EDGE RESORT**  
4200 BOAT ST  
FAIRBANKS, AK 99709  
907.474.0286



**BEAR LODGE**  
212 WEDGEWOOD DR  
FAIRBANKS, AK 99701  
1.800.528.4916



**SOPHIE STATION SUITES**  
1717 UNIVERSITY AVE S  
FAIRBANKS, AK 99709  
907.479.3650



\*Hotels are assigned at Norwegian's discretion. We are unable to accept requests for specific hotels. Hotels are guaranteed at 30 days prior to the start of the tour. Norwegian Cruise Line reserves the right to substitute hotels of equal or greater quality. Extra nights must be booked independently.